



## WARRANTY

**Register your product within 30 days of purchase to activate its one-year limited manufacturer's warranty at [ovente.com/register](https://www.ovente.com/register)**

**WARRANTY IS ONLY VALID IF YOU REGISTERED WITHIN 30 DAYS AFTER PURCHASE.**

### **LIMITED ONE (1) YEAR WARRANTY**

Your product has a one (1) year warranty period from the date of purchase from an authorized retailer. In the event that the product is defective, feel free to contact us to arrange for a replacement. This warranty only covers defects in workmanship and materials. The warranty does not include damage due to abuse or misuse, any commercial use or accidents.

### **LIMITATIONS**

The warranty stated above is the only warranty applicable to this product. Other expressed or implied warranties are hereby disclaimed. No verbal or written information was given by the Manufacturer, its agents or employees shall create a guarantee or in any way increase the scope and duration of this warranty. Repair or replacement as provided under this warranty is the exclusive remedy of the consumer. The manufacturer shall not be liable for incidental or consequential damages resulting from the use of this product. Any implied warranty of merchantability or fitness for a particular purpose on this product is limited to the applicable warranty period set forth above except to the extent prohibited by law. Consumer rights may vary from state to state.

**Customer Service: (855) 926-2626**

**Visit us at [ovente.com](https://www.ovente.com)**



Facebook.com/ovente



@OventeTweets



@Ovente

# **OVENTE®**

**Seductive Ceramic Ionic Tourmaline Lightweight  
Professional Hair Dryer  
3600 Series**



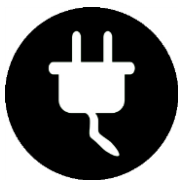
Before using please read the instruction manual and keep it for future use.





## HAIR DRYER MAINTENANCE

1. Switch the hair dryer off, unplug from the mains and allow to cool fully.
2. Wipe over the casing using a soft damp cloth
3. Remove and wash the concentrator in warm soapy water
4. Ensure all parts are dried thoroughly with a soft towel before reusing
5. Do not use harsh abrasives or cleaners. Withdraw the filter and remove any build-up of hair and dust.
6. Hair dryer is fitted with a rear mesh. To prevent an ingress of hair, dust or fluff and it **MUST** be kept clean. Regularly clean the internal filter by twisting and removing the rear inlet grill/ Withdraw the filter and remove any build-up of hair and dust.
7. If you have long hair or use a high amount of styling products, clean the filter regularly. i.e. at least once a month.
8. Never attempt to clean the filter by inserting an implement.
9. Ensure the hair dryer is completely cool and hair dry. **DO NOT wrap the supply cord around the appliance.** Store in original box in a cool, dry place.



## ELECTRICAL REQUIREMENTS

**Voltage:** 110 - 127V

**Power:** 2200W

**Hertz:** 60Hz

5. Use the Cool Shot Button and blow hair all over with cold air to lock the look.
6. After use, switch off and unplug the hair dryer.
7. Allow hair dryer to cool before storing away.



## **Tips for Drying Hair**

- Low heat setting is suitable for fine thin hair.
- High heat setting is perfect for thick coarse hair.
- The cool shot button seals the hair cuticles to set your hair making it shinier and long-lasting.
- Use a Fast hot airflow and High heat setting for initial drying.
- Use soft hot airflow and Low heat setting as hair begins to dry, and for styling.
- Use a slim concentrator nozzle to direct heat to roots for lift and volume.

# Seductive Ceramic Ionic Tourmaline Lightweight Professional Hair Dryer

Ovente hair dryers are not only powerful but also sleek in design and very versatile. The Ovente professional hair dryers have multiple features that makes the hair shiny and healthy in no time: Ceramic coating which has a heat control technology that distributes the heat evenly, and minimizes heat damage, and dries the hair faster. Ionic helps the hair break down water molecules -- it neutralizes positive (+) ions in the hair, reducing frizz and restoring glow which makes the hair looking conditioned every day. Tourmaline technology emits negative (-) ions that transforms the hair into its shiny state. It has a gemstone coating that helps smoothen the hair by sealing the cuticle and remaining moisture -- for a frizz-free hair. The hair dryer is powered by a built-in weight balanced AC motor for a more powerful and long-lasting hair dryer – perfectly suitable for hair stylists. Ergonomically designed finishes for a seductive touch feeling while in use. 2 speed and 3 heat settings that suits your needs: Low heat setting is suitable for fine thin hair while High heat setting is perfect for thick coarse hair . The cool shot button seals the hair cuticles to set your hair making it shinier and long-lasting. Comes with an ALCI safety plug which has a ground-fault interrupter built inside for preventing electric shock. Feel beautiful every day as if you just left the salon!


## FEATURES

- The Ovente Seductive Ceramic Ionic Tourmaline Hair Dryer features a robust and powerful 2200 Watt motor that not only dries the hair inside and out but leaves it shiny, smooth and healthy
- Built-in Ceramic coating which has a heat control technology that distributes the heat evenly which dries the hair faster, Ionic helps the hair break down water molecules -- it neutralizes positive (+) ions, restoring glow looking conditioned, and Tourmaline Technology emits negative ions and helps smoothen the hair by sealing the cuticle and remaining moisture -- for a frizz-free hair
- The hair dryer has a weight balanced AC motor specifically made for professional hair stylists which makes it more powerful and long lasting. The cool shot button feature helps you set your hair style with ease and extra-long cord with ring that can be hang easily
- You deserve it; feel beautiful every day as if you just left the salon. The hair dryer features an ergonomic grip matte finish for protection and is very seductive to the touch
- 2 speed and 3 heat settings that features versatility and styling prowess at your own home. Choose the heat setting that is perfect for your hair type. Comes with two concentrator nozzles that focuses and targets frizzly hair!



## IMPORTANT SAFEGUARDS

*When using your hair dryer, basic safety precautions should always be followed, including the following:*

- Read all instructions carefully before using the hair dryer.
- Before connecting the hair dryer, make sure that its rating corresponds to that of a power supply. The plate is at the handle of the appliance.
- Do not use the appliance for the purpose other than intended domestic use.
- Do not use the appliance for outdoors.
- Never leave the appliance unsupervised when in use.
- From time to time check the cord for damages. Never use the hair dryer if cord shows any signs of damage. Should the cord be damaged, contact your service provider.
- Never immerse the hair dryer in water or any other liquid for any reason.
- Never place it into the dishwasher.
- Never use the hair dryer near any hot surfaces.
- Always unplug immediately after using.
-  Do not use while bathing.
- Do not place or store the hair dryer where it can fall or be pulled into a tub or sink.
- If hair dryer falls into water, unplug it immediately. Do not reach into the water.
- Never use accessories that are not recommended by Ovente as they could constitute any danger and risk to damage the appliance.
- Never move the hair dryer by pulling the cord. Make sure the cord cannot get caught in any way. Do not wind the cord around the hair dryer and do not bend it.

3. Using a round bristle brush, brush to each section part of the way down and hold it there tightly. Put the dryer downward position and follow the brush as it pulls all the way through. To smooth ends, slip the brush underneath a section and blow over the curve.



4. To have a more polished effect, repeat step 3 with a comb.





## **Using your Hair Dryer**

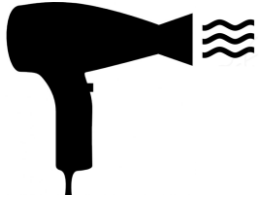
1. Towel dry your hair after washing, and detangle with a large comb from scalp to tip.
2. Plug the hair dryer into a suitable main socket.
3. Divide hair into 3-4 inch sections. Hold as section two-thirds of the way down and pull tightly.



4. Select the Power Switch to select desired heat and air speed. Use a fast hot airflow and High heat setting for initial drying. Use soft hot airflow and Low heat setting as hair begins to dry, and for styling. Use a slim concentrator nozzle to direct heat to roots for lift and volume. Put the dryer in a downward position over each section.



- The hair dryer can be used by children and persons with reduced physical, sensory or mental capabilities or lack of experience and knowledge if they have been given supervision or instruction concerning use of the appliance in a safe way and if they understand the hazards involved. Children shall not play with the hair dryer.
- **Attention:** when using electric appliances, the basic safety precautions must always be observed to avoid risks of fire, electric shocks and physical injury.
- Always make sure the hair dryer is not wet and never use it with wet hands.
- Unplug the hair dryer after and when not in use.
- The air intake grill becomes hot while using the hair dryer. Make sure the cord does not come into contact with the air intake grill.
- Never block the air openings of the hair dryer or place it on a soft surface, such as a bed or couch, where air opening may be blocked. Keep the air opening free of lint and hair.
- Make sure the hair does not come into direct contact with the air intake opening.
- Do not leave the hair dryer unattended while it is connected to the power supply.
- Ensure hands are dry and hair is free from excess water before handling the plug or switching on the appliance.
- Do not use outdoors or operate where aerosol (spray) products are being used or where oxygen is being administered.
- Do not use an extension cord with this hair dryer.
- Attachments may be hot during use. Allow them to cool before handling.
- Do not operate with a voltage converter.



## USING THE HAIR DRYER

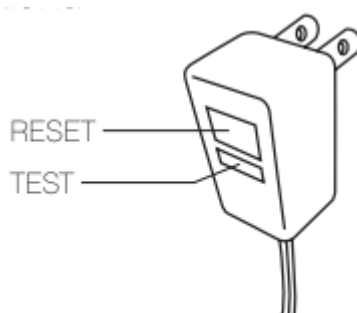
### POLARIZED PLUG

This appliance has a polarized plug (one blade is wider than the other). To reduce the risk of electric shock, this plug will fit in a polarized outlet only one way. If the plug does not fit fully in the outlet, reverse the plug. If it still does not fit, contact a qualified electrician. Do not modify the plug in any way.

### Appliance Leakage Circuit Interrupter (ALCI)

This hair dryer is equipped with an Appliance Leakage Circuit Interrupter (ALCI), a safety feature that renders it inoperable under some abnormal conditions, such as immersion in water. To make sure that the ALCI is functioning properly and the exclusive water sensing system (ALCI) is working, perform the following test:

1. Plug-in the hair dryer and press the TEST button on the plug.
2. Hair dryer will stop working. There will be an audible click and the RESET button will pop out.
3. To reset ALCI with a RESET button: Unplug the unit, Then push RESET button in, and reinsert plug into the outlet.
4. Be sure to repeat test every time you use this hair dryer to confirm that the ALCI is operational.



5. If ALCI is not functioning properly, contact your service provider.
6. Should the hair dryer go off and the RESET button pop up during use, this could indicate a malfunction in the hair dryer. Remove the plug from the outlet and allow the hair dryer to cool. RESET the ALCI. Reinsert the plug into the outlet. The dryer should function normally. If not, contact your service provider.
7. If ALCI is not functioning properly, contact your service provider.

## How to Operate

