



## WARRANTY

Register your product within 30 days of purchase to activate your one-year limited manufacturer's warranty at [ovente.com/register](https://ovente.com/register)

**WARRANTY IS ONLY VALID IF YOU REGISTER WITHIN 30 DAYS AFTER PURCHASE.**

### LIMITED ONE (1) YEAR WARRANTY

Your product has a one (1) year warranty period starting on the date of purchase from an authorized retailer. In the event that the product is defective, please contact us to arrange for a replacement. This warranty only covers defects in workmanship and materials. The warranty does not include damage due to misuse, commercial use, accidents, or natural wear and tear.

### LIMITATIONS

The warranty stated above is the only warranty applicable to this product. Other expressed or implied warranties are hereby disclaimed. No verbal or written information given by the Manufacturer, its agents or employees shall create a guarantee or in any way increase the scope and duration of this warranty. Repair or replacement as provided under this warranty is the exclusive remedy of the consumer. The manufacturer shall not be liable for incidental or consequential damages resulting from the use of this product. Any implied warranty of merchantability or fitness for a particular purpose on this product is limited to the applicable warranty period set forth above except to the extent prohibited by law. Consumer rights may vary from state to state.

**Customer Support: [ovente.com/support](https://ovente.com/support)**

**Visit us at [ovente.com](https://ovente.com)**



Facebook.com/ovente



@OventeTweets



@Ovente

# OVENTE®

## 6" Dual-Sided LED Tabletop Mirror, 1x/7x MLT60 Series



Before using, please read the instruction manual and keep it for future use.



## **IMPORTANT SAFEGUARDS**

*When using your mirror, basic safety precautions should always be followed, including the following:*

- Read all instructions carefully before use.
- Provide close supervision when mirror is being used near children.
- Never operate mirror if it is not working properly, has been dropped, damaged or submersed into water.
- Do not use outdoors.
- Do not disassemble the mirror. Do not attempt to remove, alter or replace the permanent LED light.
- Never operate where aerosol (spray) products are being used or where oxygen is administered.
- Be sure mirror is not in a position where it can reflect sunlight. Reflected sunlight can cause fire.
- Always switch the mirror OFF after use and unplug before storing.

## PARTS AND FEATURES

- **LED LIGHTED TABLETOP MIRROR WITH DIFFUSED RING LIGHT** – This tabletop mirror with lights helps in applying makeup flawlessly by minimizing shadows
- **DUAL MAGNIFICATION MIRROR** – 1x/7x distortion-free magnifying mirror for a consistent beauty routine
- **ROUND GLASS MIRROR** – Optical-quality round mirror for enhancing natural beauty
- **COOL-TONE WHITE LED LIGHT**– For energy efficiency and long-lasting use
- **BATTERY-OPERATED MIRROR** – 4x AAA batteries (not included) for a clean, cord-free vanity space
- **360-DEGREE ROTATING MIRROR** - Rotating mirror display for easy viewing at any angle
- **NICKEL-BRUSHED FINISH** – For a timeless, long-lasting design



### USING THE MIRROR

1. To use the mirror, simply turn the switch “ON”.

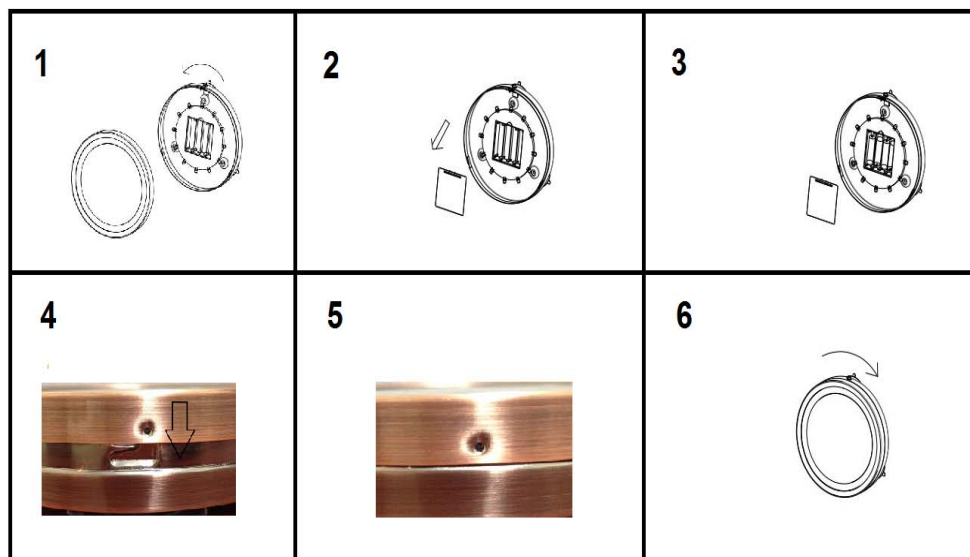
2. Always turn "OFF" the switch after use. Leaving the mirror "ON" will reduce the battery life.

### Magnification Effect



**NOTE:** When you are far from the mirror, the image is inverted. As you get closer, the image flips to the actual virtual image in magnification standard. This is due to the concave lens of the 7x magnification.

### Battery Replacement



1. Before attempting to replace the batteries, turn "OFF" the switch.
2. Turn mirror to its 7x magnification.
3. Hold mirror facing towards you then twist counterclockwise.  
(refer to figure 1)
4. Pull the mirror frame out.
5. Open the battery compartment and put 4 x AAA batteries.  
(refer to figure 2)
6. Close the battery compartment.
7. Put the mirror frame back and make sure the 3 side dimples are aligned on the groove.  
(refer to figure 4)
8. Press the mirror frame down.  
(refer to figure 5)
9. Turn right (clockwise) to close.  
(refer to figure 6)

**NOTE:**

**-It is recommended to always use high quality lithium batteries to maintain its maximum performance.**



## CARE/DISPOSAL OF LITHIUM BATTERIES

- Use only fresh batteries of the required type and size.
- Do not mix old and new batteries, different types of batteries or rechargeable batteries of different capacities.
- Depleted batteries are to be removed from the item.
- Dispose old batteries properly and according to your local regulations.



## MIRROR MAINTENANCE

1. Make sure that LED lights are "OFF" before cleaning.
2. Use a soft, wet cloth to remove dirt and stains. Wipe with dry cloth afterwards.
3. To protect the mirror from dust, simply store it in its original box. Store out of reach of children in a safe, dry location.



## TECHNICAL SPECIFICATIONS

**Model:** MLT60 Series

**Battery:** 4\*AAA Battery (not included)